



# Pump & Polish Technique

We know your clients need volume at the root but don't necessarily want the curl from a perm. This unique how-to technique pumps up body and volume while also providing clients with a fresh polishing of color and shine! This is a great add-on service to any salon menu!

### Tools Needed:

- Bender rods or Perm rods
- Tressa Wave Picks (rod stabilizers)
- Protage
- Moistureze
- Irresistible Color



## Pump & Polish Wrapping Techniques

### Cascade Lift Technique



Sectioning

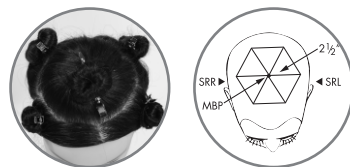
Begin at the Main Balance Point (MBP). Make a 2 1/2" parting, radiating from the MBP, making 6 triangles. Create subsections 1" from the MBP.



Completed Wrap

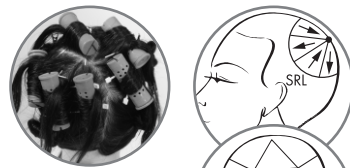
Comb middle section to the MBP and place a bender on base at the MBP. The remaining sections are wrapped in a spiral, off the scalp and wound 1 1/2 times around the bender. Leave the ends free to hang down.

### Maxi-Lift Technique



Sectioning

Begin at the Main Balance Point (MBP). Make a 2 1/2" parting, radiating from the MBP, making 6 triangles.



Completed Wrap

Comb hair to the middle of the triangles and determine if the hair will be moving forward, backward or downward. Place a rod at the base of hair and wrap 1 1/2 times around the rod, leaving ends free. Secure rods by placing 2 picks under each rod. Note: Depending on the style and length of the hair, a second section may be added.

**Step 2** Cleanse and prepare hair by using Remove-All Plus Shampoo. Lather and leave on the hair for 5 minutes. This ensures that all product build up and contaminants are removed from the hair. Apply Tressa's Moistureze to even out the porosity.

**Step 3** Wrap the hair in desired pattern (see the provided techniques).

**Step 4** Apply the chosen waving lotion (combine bottles A and B first if necessary) to benders (at the base) or to rods. Note: For both of the techniques, it is important to keep the waving solution away from the ends of the hair. Applying Protage to the ends will protect the hair from absorbing the solution. Cover with plastic bag.

**Step 5** Process according to the directions on the inside of the wave box until it accepts the pattern or shape of the tool used.

**Step 6** Rinse with very warm water for 5 minutes and until no odor is emitted from the hair.

**Step 7** Towel blot and air oxidize for 5 minutes.

**Step 8** Add 1 oz. of chosen Irresistible Color to the neutralizer and blend gently. Apply to ALL of the hair. Air neutralizer for 5 minutes. Remove the tools from the hair. Leave the color on for another 2 minutes.

**Step 9** Rinse and shampoo with Replenishing Shampoo and Conditioner.

## Pump & Polish Procedure

**Step 1** Analyze the hair and determine the appropriate Tressa wave to use to reform the hair. Read the important cautions on the inside of the Tressa wave box before beginning service. Perform an IT Test (Internal Tension Test). This step determines the minimum tool size needed to effectively produce the desired result and should never be omitted. If the wrong size of tool is used for reforming, the longevity of the service may be compromised.

### Directions for IT Test:

1. Take a single strand of hair and hold the strand between thumb and forefinger of each hand, about 1 1/2" apart.
2. Move your hands towards each other and the hair will form a loop.
3. The loop determines the size of the tool to be used.

